

PROCAD Support Portal

FAQ 725127 – Securing SQL login in the Profile 10.x environment – Version 01

Symptom

If the SQL login in your system has an insecure password, we strongly recommend that you change it. From a security point of view, the password should have at least 16 digits.

In the following, we provide you with guidance regarding where changes need to be made. Please contact your Procad project manager or PROCAD Support in case of ETOR installation and don't do the changes on your own.

Contents

| | |
|---|-----------|
| <i>Change database user and password.....</i> | <i>2</i> |
| <i>PRO.FX-AppServer ProfileConfiguration.xml customize.....</i> | <i>7</i> |
| <i>Licensing service.....</i> | <i>9</i> |
| <i>Service API</i> | <i>9</i> |
| <i>ERP SERVER (BizTalk Server).....</i> | <i>10</i> |
| <i>Autovue Server.....</i> | <i>10</i> |
| <i>Reports.....</i> | <i>11</i> |
| <i>ETOR.....</i> | <i>14</i> |
| <i>Webdav.....</i> | <i>14</i> |
| <i>Applus.....</i> | <i>14</i> |
| <i>Pushrep.....</i> | <i>14</i> |
| <i>Document Loader.....</i> | <i>14</i> |
| <i>Cold Loader.....</i> | <i>14</i> |
| <i>Migrationprovider.....</i> | <i>15</i> |
| <i>Importtool.....</i> | <i>15</i> |
| <i>Other changes in other programs and data.....</i> | <i>16</i> |

PROCAD Support Portal

Solution

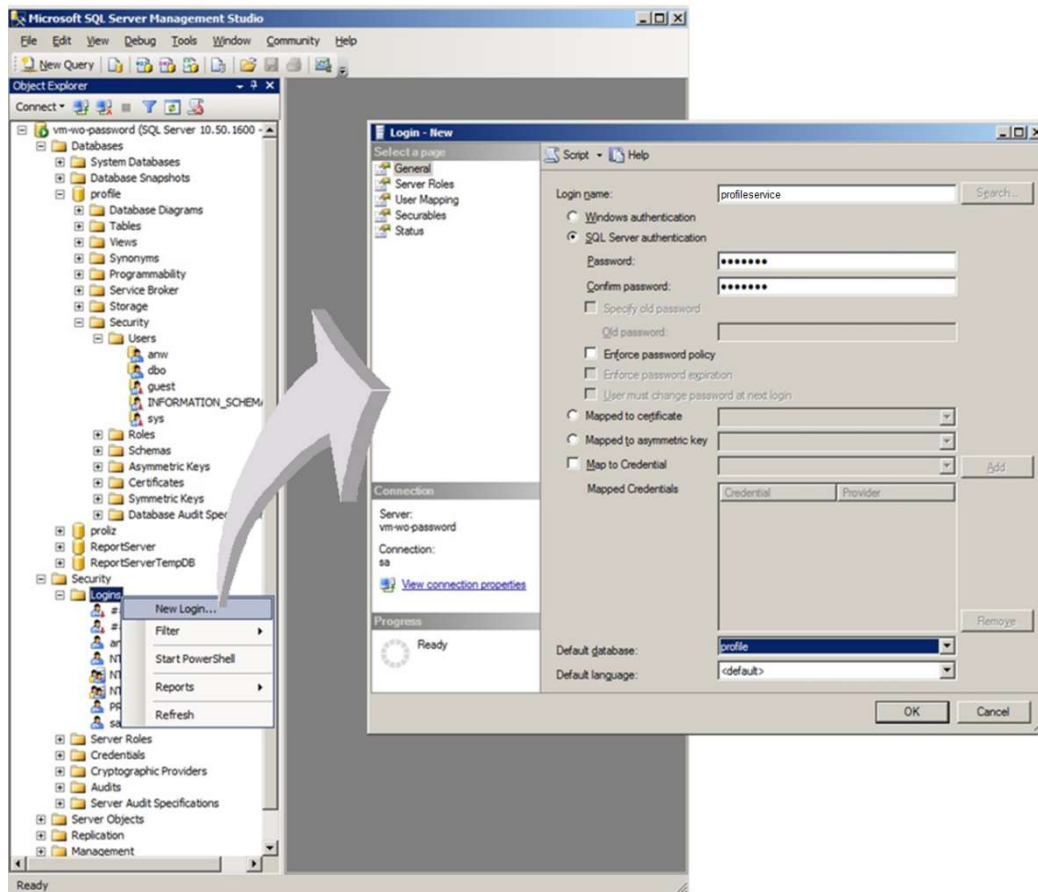
Change database user and password

For security reasons, PROCAD recommends using secure login data for SQL access. Please also note the possibility of authentication via Integrated Security which exists from PRO.FILE 10.4 SP14. The instructions for this can be found in the corresponding release notes.

This chapter describes the steps necessary to access the PRO.FILE database via another user. In these instructions we use the user "profiles-service" as an example. This user must be entered as a user in the "profiles-service" database. After successful conversion, the user "anw" can or must be deleted or the insecure password must be changed to a secure password.

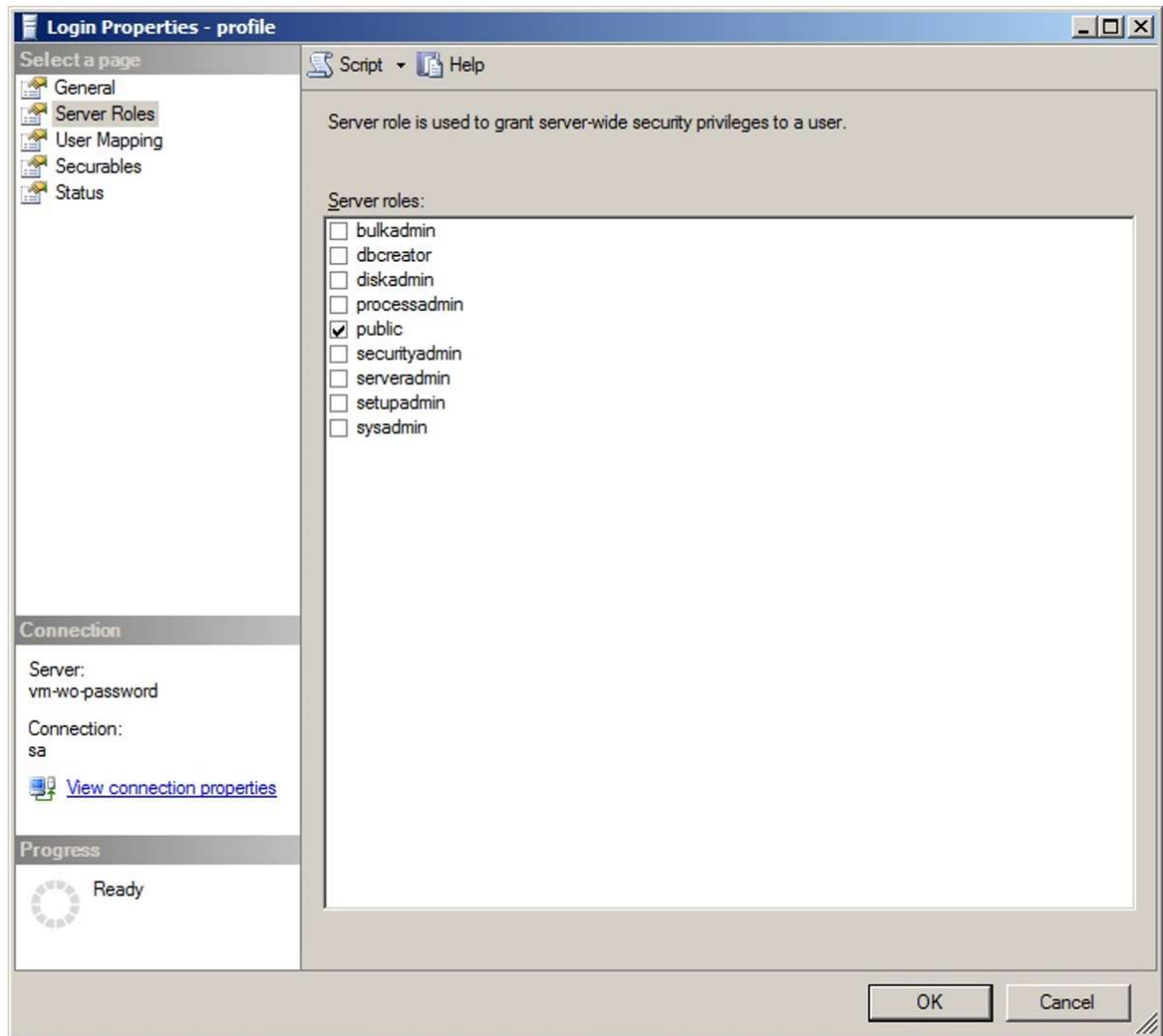
1. Start SQL Server Management Studio and log in as a system user.
2. Open the "Security" -> "Logins" section.
3. Select the "New Login..." function in the context menu.

PROCAD Support Portal



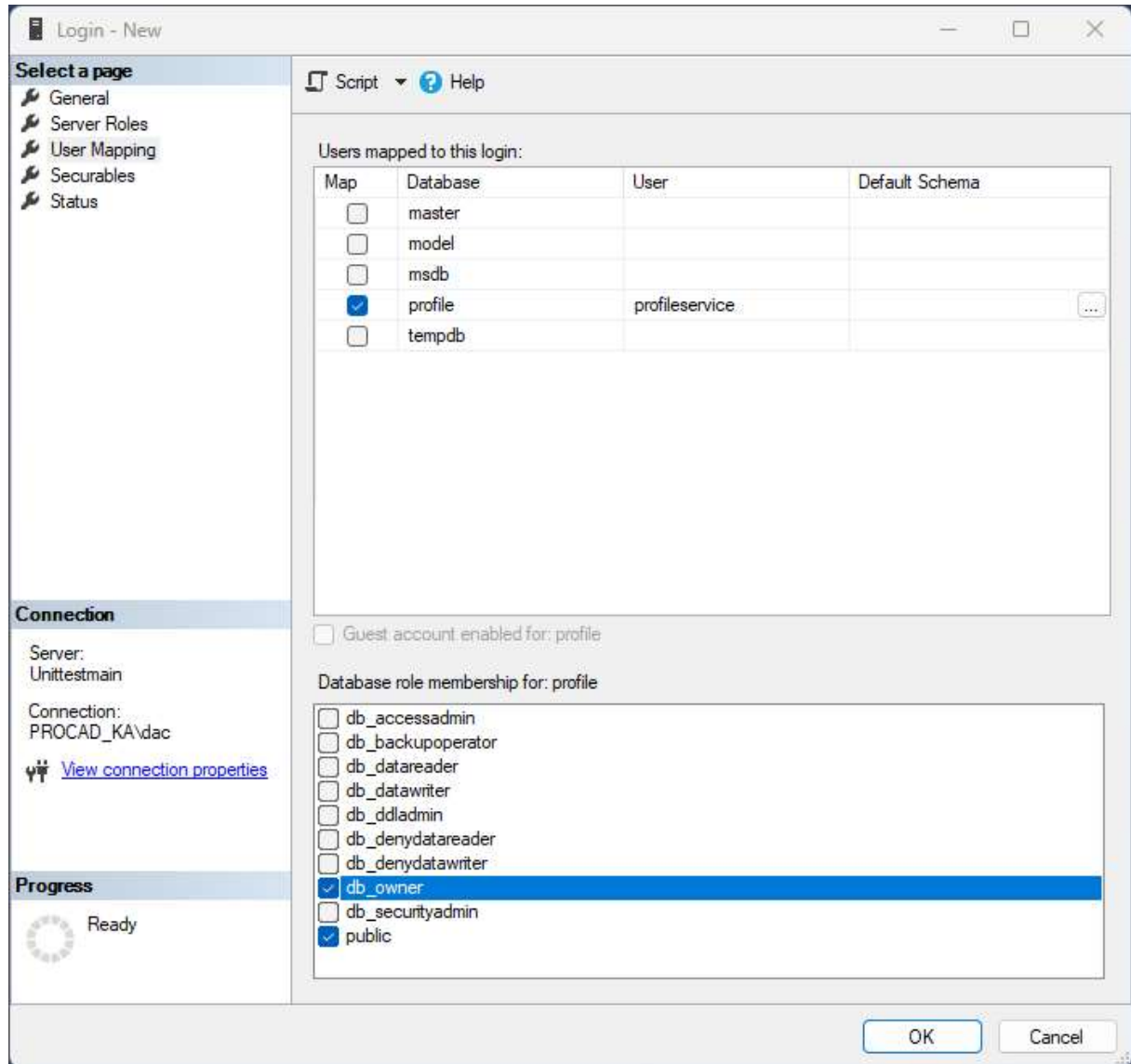
4. In the "General" menu item, create the "profiles-service" user with "SQL Server Authentication" and the default database "profile".
5. After that, the user profiles-service must be assigned the role "public". This is done in the "Server roles" area. The Sysadmin authorization is not necessary for our scope of delivery. If the Sysadmin authorization is not assigned, it may be necessary to set additional rights explicitly for more complex profile installations.

PROCAD Support Portal



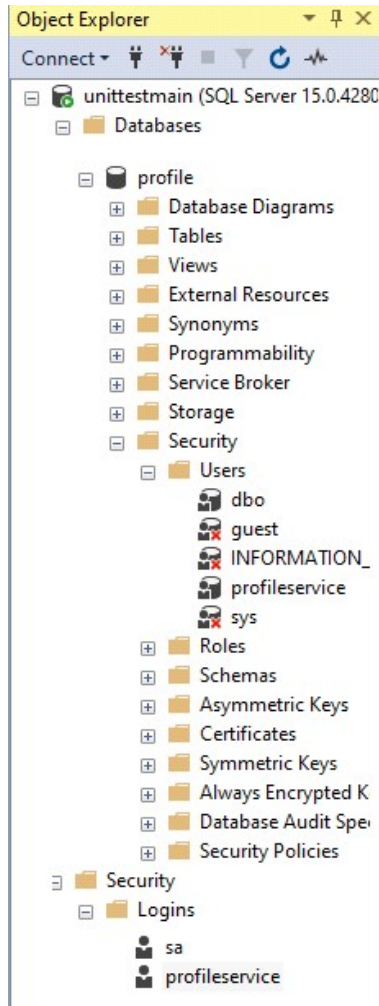
- Under "User Mapping" enter the user "profiles-service" with the default schema "dbo" in the database "profile". The roles "db_owner" and "public" are assigned to him in the database "profile".

PROCAD Support Portal



- Confirm the creation of the user with <OK>. The user "profiles-service" will now be displayed among the logins as well as among the users of the database "profile".

PROCAD Support Portal



8. In the last step, the user "anw" is removed from the "profile" database. Here it must be noted whether the user "anw" still owns schemas in the database; these ownerships must be deleted.

PROCAD Support Portal

PRO.FX-AppServer ProfileConfiguration.xml customize

In the file ProfileConfiguration.xml (%ALLUSERSPROFILE%\Procad\PROFX) the tenants (clients) are listed with their access data. A changed password must be entered here in encrypted form.

```

1  %ALLUSERSPROFILE%\Procad\PROFX.xml version="1.0" encoding="utf-8" ?>
2  <AppServerConfiguration>
3
4  <ContainerConfigurationSet Logging="ClientSessionsOnly" LogFolder="" LogLevel="Fatal" ShowErrorDetails="LocalOnly" Service
5  <!-- ContainerConfigurationSet Default Attribute Values:
6  Logging="ClientSessionsOnly" possible: On|Off|ClientSessionsOnly
7  LogFolder=""
8  LogLevel="Info" possible: Debug|Info|Warn|Error|Fatal
9  ShowErrorDetails="LocalOnly" possible: Never|Always|LocalOnly
10 ServiceBusEnabled="false"
11 HttpPort="80"
12 HttpsPort="443"
13 RequireSsl="false"
14 IdentityServerEnabled="false"
15 -->
16
17 <!-- empty -->
18 </ContainerConfigurationSet>
19
20 <TenantConfigurationSet>
21
22 <DefaultConfiguration WatchDogEnabled="false" WatchDogInterval ="30" />
23
24 <Configuration Tenant="MYTENANT"
25 Public="true"
26 Server="MYSERVER\MYINSTANCENAME"
27 Database="MYDATABASE"
28 Username="MYUSERNAME"
29 Password="crypt(61885967E46CFDD2)"
30 DefaultFileServer="MYDEFAULTFILESERVER" DefaultFileServerPort="7600"
31 DefaultCacheServer="MYDEFAULTCACHESEVER" DefaultCacheServerPort="7605"
32 FileServerClientCachingEnabled="true" MaxFilesPerDirectory="2000"
33 EscalationMonitorEnabled="MYESCALATIONMONITOR" EscalationMonitorInterval="MYESCALATIONINTERVAL" />
34 </TenantConfigurationSet>
35
36 </AppServerConfiguration>
37

```

Note: Procrypt2

Starting from 10.4 SP14 they can encrypt the password for the ProfileConfiguration.xml also over the program Procrypt2 by means of AES 256. Follow the instructions of Procrypt.exe, but use the program file ProCrypt2.exe. You can recognize the new variant of the encrypted text by the addition AES256 in the text. Example crypt(**AES256**:xxxxxxx)

1. Encrypt the text "{your password}" with the program "procrypt".

```

Windows PowerShell
PS C:\Program Files (x86)\procad\Profile_App_Server> ./procrypt.exe
Input text: *****
Verify text: *****
crypt(8D8FE1615CC698EDF363407A72400E85)
PS C:\Program Files (x86)\procad\Profile_App_Server> ./procrypt.exe password
crypt(8A6EB2A9AD0144E7)
PS C:\Program Files (x86)\procad\Profile_App_Server> _

```

PROCAD Support Portal

Note: Encrypted password on the clipboard

After successful encryption with procrypt, the string is automatically in the clipboard and can be copied from there into the file "ProfileConfiguration.xml".

2. Open the "ProfileConfiguration.xml" file with a text editor (e.g. Notepad) and paste the encrypted password from the clipboard into the corresponding line.
3. Save the changes.
4. Restart the Internet Information Services (IIS).

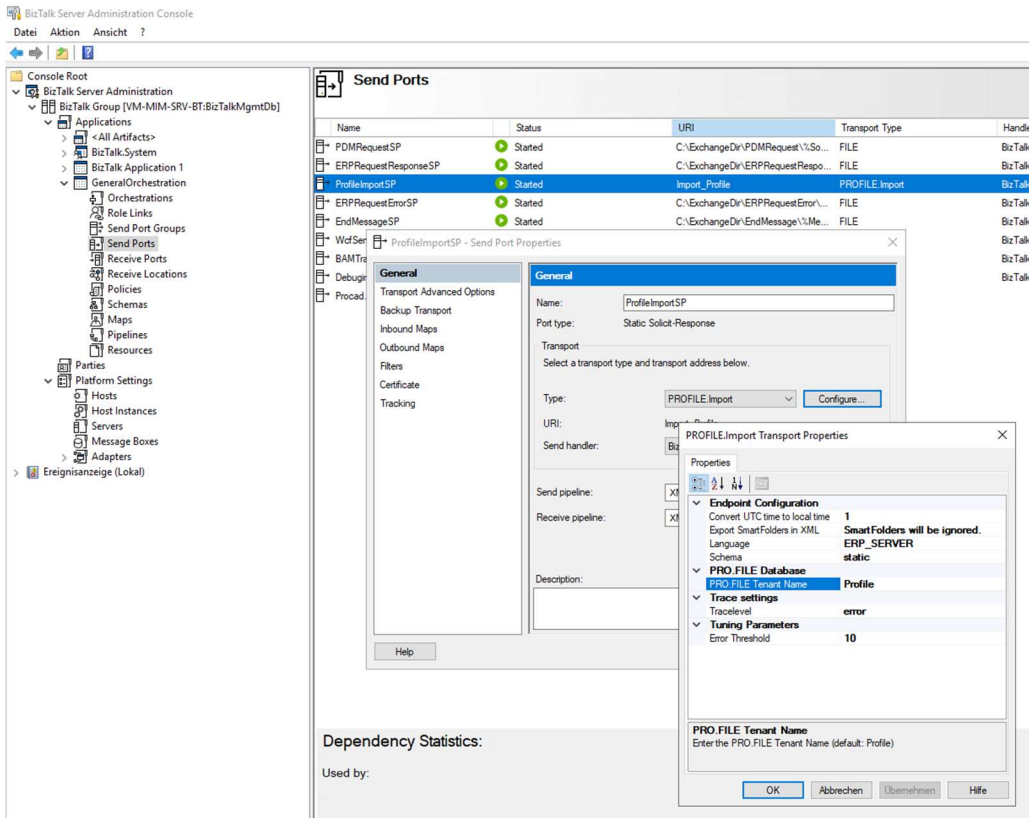
PROCAD Support Portal

Licensing service

The adjustment of the keys for the license service in the registry is no longer necessary under 10.x.

Service API

You can check the configuration of BizTalk in the BizTalk Administration Console.



The screenshot shows the BizTalk Administration Console interface. The left pane displays the tree view with 'Send Ports' selected under 'GeneralOrchestration'. The main pane shows a table of Send Ports:

| Name | Status | URI | Transport Type | Handle |
|----------------------|---------|------------------------------------|----------------|---------|
| PDMRequestSP | Started | C:\ExchangeDir\PDMRequest\%So... | FILE | BizTalk |
| ERPRequestResponseSP | Started | C:\ExchangeDir\ERPRequestRespo... | FILE | BizTalk |
| ProfileImportSP | Started | Import_Profile | PROFILE.Import | BizTalk |
| ERPRequestErrorSP | Started | C:\ExchangeDir\ERPRequestError\... | FILE | BizTalk |
| EndMessageSP | Started | C:\ExchangeDir\EndMessage\%Me... | FILE | BizTalk |
| WdSer | | | | BizTalk |
| BAMTr | | | | BizTalk |
| Procad. | | | | BizTalk |

The 'ProfileImportSP' row is selected, and its properties are shown in a dialog box. The 'General' tab is active, showing the following configuration:

- Name: ProfileImportSP
- Port type: Static Solut-Response
- Transport: PROFILE.Import
- URI: Import_Profile
- Send handler: BizTalk
- Send pipeline: X
- Receive pipeline: X
- Description:

The 'Properties' tab is also visible, showing the following configuration:

- Endpoint Configuration:
 - Convert UTC time to local time: 1
 - Export SmartFolders in XML: SmartFolders will be ignored.
 - Language: ERP_SERVER
 - Schema: static
- PRO.FILE Database:
 - PRO.FILE.Tenant.Name: Profile
- Trace settings:
 - Tracelevel: error
- Tuning Parameters:
 - Error Threshold: 10

At the bottom of the dialog, there is a field for 'PRO.FILE Tenant Name' with the value 'Profile' and buttons for 'OK', 'Abbrechen', 'Überschreiben', and 'Hilfe'.

On the computer with the BizTalk installation you have to adjust the file
C:\ProgramData\PROCAD\PROFX\ProfileConfiguration.xml. The new password must be entered encrypted.

Details about this are described in chapter "PRO.FX-AppServer ProfileConfiguration.xml anpassen" in detail. A restart of the IIS is not necessary. A restart of the BizTalk and the Service API are necessary.

PROCAD Support Portal

ERP SERVER (BizTalk Server)

The changes are made via the ProfileConfiguration.xml file (see chapter "PRO.FX-AppServer ProfileConfiguration.xml anpassen"). However, the file may need to be customized on a separate computer.

Autovue Server

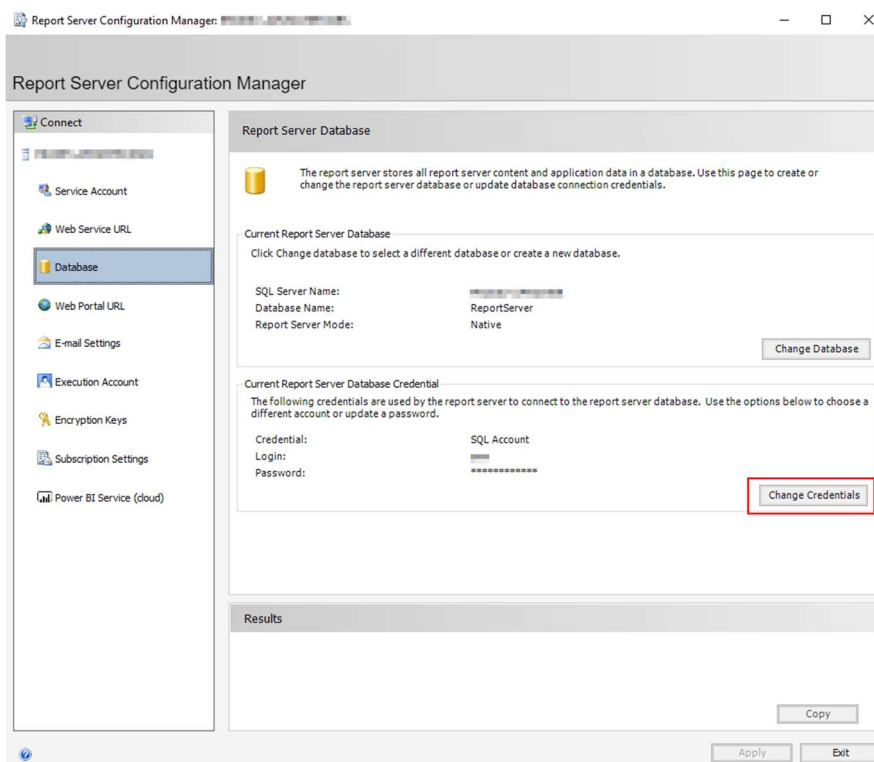
No adjustments are necessary on the Autovue server.

PROCAD Support Portal

Reports

The Report Server configuration is customized via the Report Server Configuration Manager. It is recommended to use a separate sql account and not the one of the PRO.FX AppServer.

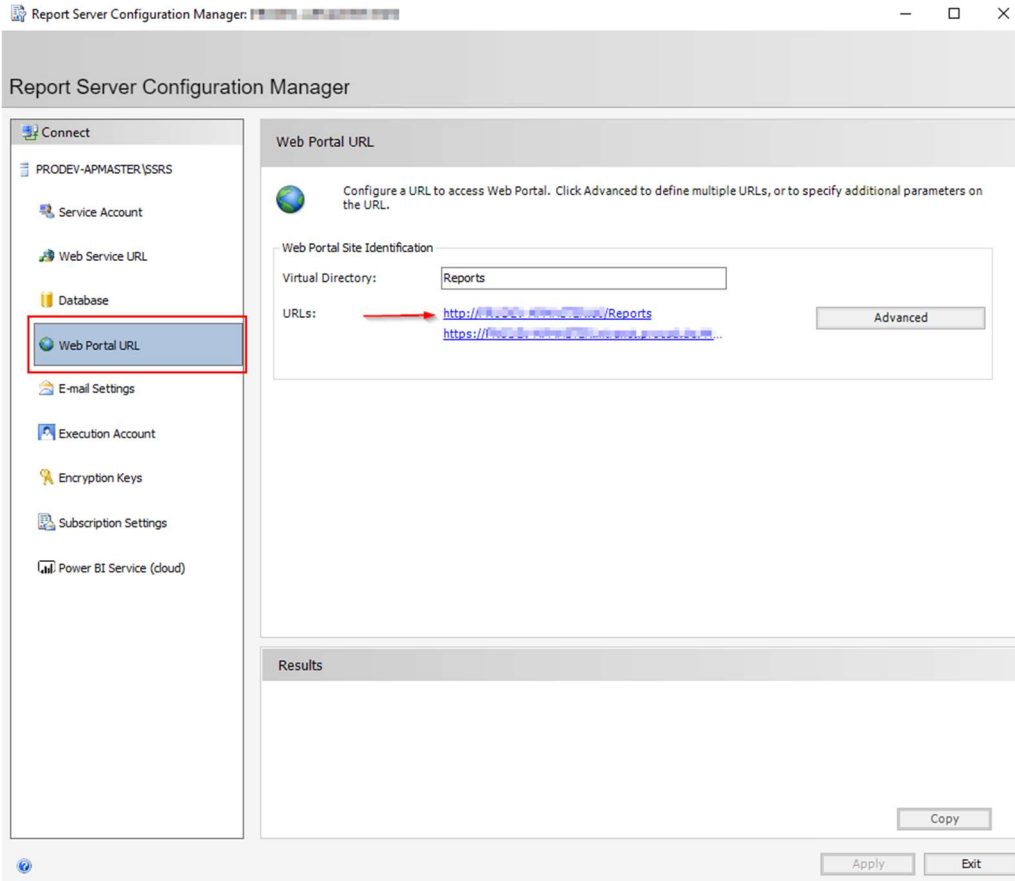
The first step is to change the credentials of the Execution account.



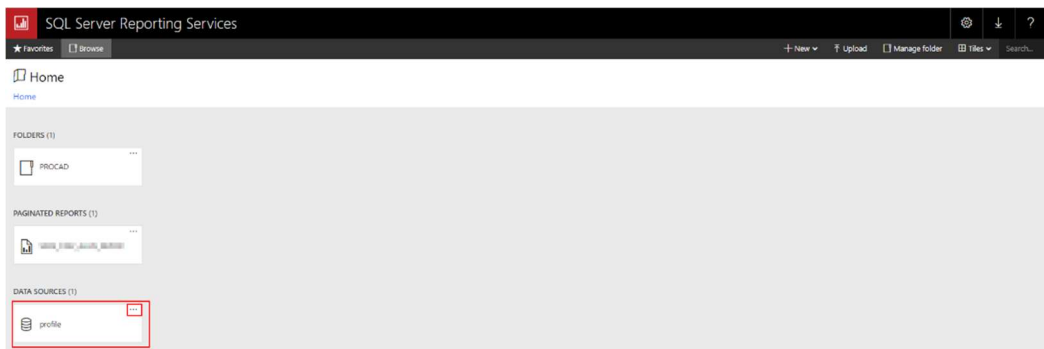
The credentials of the data source must be adjusted as below:

1. Open the Reporting Services Portal web page

PROCAD Support Portal

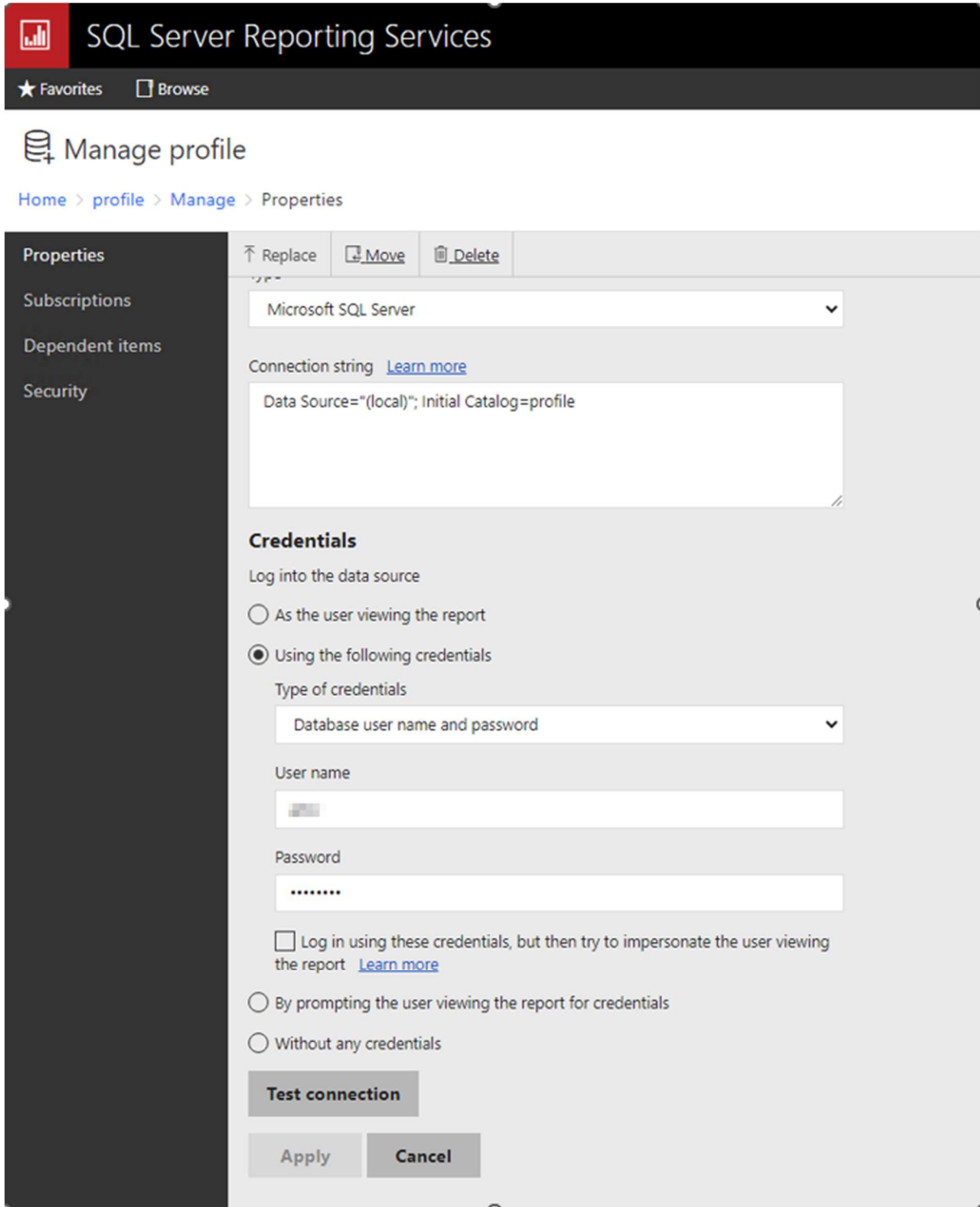


2. Then open the data source:



3. In the data source configuration you now have to adjust the credentials.

PROCAD Support Portal



The screenshot shows the 'Manage profile' page in SQL Server Reporting Services. The page title is 'SQL Server Reporting Services' and the breadcrumb is 'Home > profile > Manage > Properties'. The left sidebar contains 'Properties', 'Subscriptions', 'Dependent items', and 'Security'. The main content area has a toolbar with 'Replace', 'Move', and 'Delete' buttons. Below the toolbar, there is a dropdown menu set to 'Microsoft SQL Server'. The 'Connection string' field contains 'Data Source=(local); Initial Catalog=profile'. The 'Credentials' section is expanded, showing options to log into the data source. The selected option is 'Using the following credentials', with 'Database user name and password' selected as the type of credentials. The 'User name' and 'Password' fields are visible, with the password masked with dots. There are also options for impersonating the user, prompting for credentials, or logging in without credentials. At the bottom, there are 'Test connection', 'Apply', and 'Cancel' buttons.

PROCAD Support Portal

ETOR

For systems with an ETOR installation, you should not make the change on your own. Please contact PROCAD as described in the cover letter.

Webdav

Webdav is changed via the configuration of the Service API. However, Webdav is installed on a separate machine if necessary.

Applus

Applus DMS is changed via the configuration of the Service API. The Service API is installed on the APPlus WebServer and must be customized.

Pushrep

Pushrep is usually started via the pushrep.bat file. In a distributed scenario, this file is available on all computers with an archive server. The storage location is individual and can be found out via the Task Scheduler. In the file pushrep.bat the variable -I can be adjusted with the login. Alternatively, this can be passed via the prodbtab.dat file.

Document Loader

The Document Loader connects through a PRO.FILE user, so no customization is necessary.


Cold Loader

The Cold Loader connects through a PRO.FILE user, so no customization is necessary.

PROCAD Support Portal

Migration Provider

Open the Migration Provider. In the "SQL Server" tab, you can change the user name and password.



Parameter

Configure parameters

SQL-Server CAD Advanced

Server: vm-ht-Ser104

Database: ht_IntApiNext_1040

User: amw

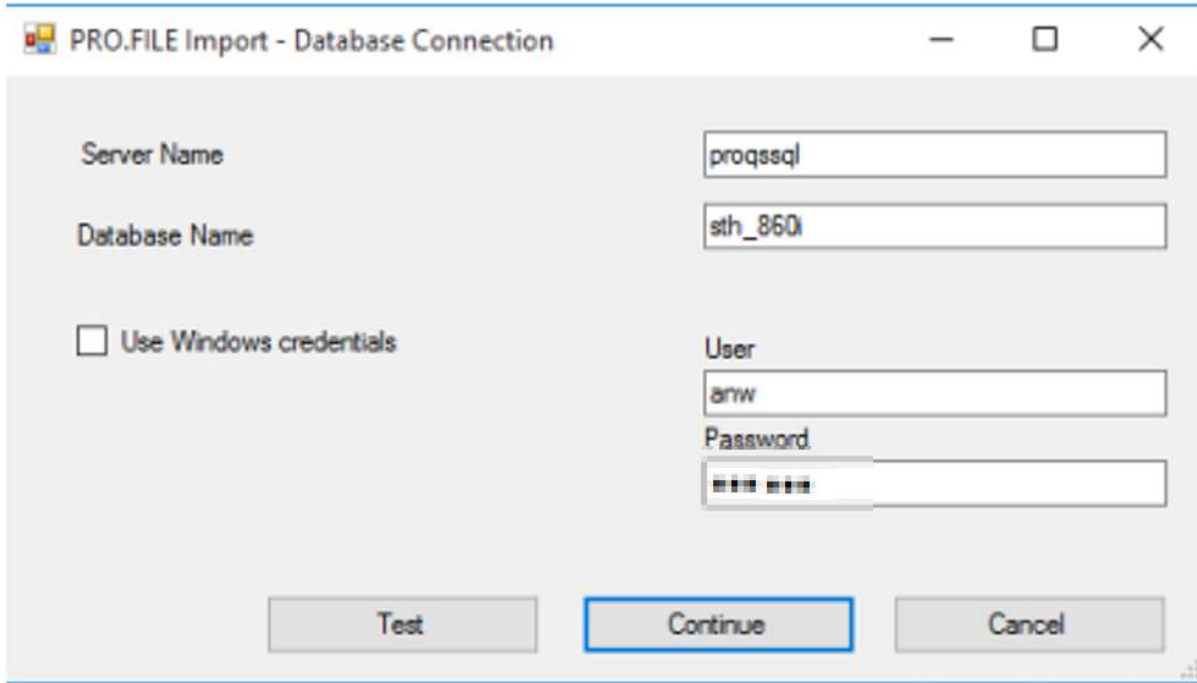
Password: ●●●

Connection succeeded! Test connection!

Import tool

In the import tool, the user name and password are requested at startup. The changed passwords can be entered there. Here, however, the use of Integrated Security (Use Windows Credentials) is also recommended.

PROCAD Support Portal



Other changes in other programs and data

Possibly further own programs must be changed over with them. These are usually:

- User-specific programs/KSE
- User outputs
- External ADO accesses to the PRO.FILE database
- SQL-Server - Linked Server accesses to the PRO.FILE database: If you transfer data from the PRO.FILE database to other databases, the Linked Server concept of the SQL-Server is used here.